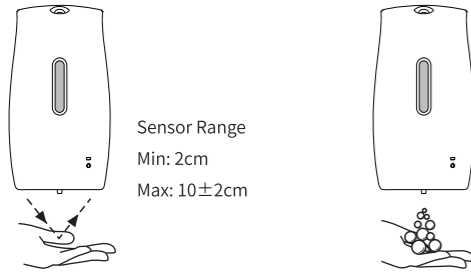


## How to Use

Please do not expose the sensor head to strong sunlight.

The sensor range is 2-12cm below the liquid outlet. When you approach your hand to the sensor area, the Green LED light will blink once.

Please prime the dispenser by inducing several times to let the air out before first using.



**Sensor Range**  
Min: 2cm  
Max: 10±2cm



### Liquid Output Type: Liquid

The liquid function dispenser is suitable for liquid concentration  $\leq 1000\text{mPa.s}$ . Open the front cover, slide the switch to I position, the liquid amount will be 1.0ml per activation; slide the switch to II position, the liquid amount will be 2.0ml per activation; slide the switch to OFF position, the power will be off.

**Note: The liquid output amount will vary slightly due to liquid concentration.**



### Liquid Output Type: Foam

For foam function, the suitable liquid is foaming liquid. Open the front cover, slide the switch to I position, the liquid amount will be 0.5ml per activation; slide the switch to II position, the liquid amount will be 1.0ml per activation; slide the switch to OFF position, the power will be off.

**Note: The liquid output amount will vary slightly due to liquid concentration.**

-5-



### Liquid Output Type: Spray

The spray function dispenser is suitable for 75% alcoholity liquid. Open the front cover, slide the switch to I position, the liquid amount will be 0.5ml per activation; slide the switch to II position, the liquid amount will be 1.0ml per activation; slide the switch to OFF position, the power will be off.

**Note: The liquid output amount will reduce and the spray angle will be smaller when in lower power consumption.**

The dispenser will be in OFF condition when the front cover is open. Please close the front cover after setting the liquid output amount.

**Note: The liquid output amount will vary slightly due to battery life.**

When the motor works during induction without any liquid outputting, please check whether the liquid tank is empty. If so, please fill in liquid to ensure normal use. It will incur damage to the dispenser when in ON condition with no liquid for a long time.

**Note: Exceeding the standard will reduce product life even damage the product.**

## Maintenance

Do not use steel balls or any detergents containing acidic or corrosive substances to clean the dispenser. It will incur damage to the dispenser surface. Please use water and towel to clean the dispenser.

When cleaning the mounting tiles, please make sure no detergent splashed onto the dispenser.

-6-

## Safety Caution

Ignoring or misunderstanding these signs will result in the following two situations:

**Warning** This sign indicates "may cause personal injury"

**Attention** This sign indicates "may cause damage to the product"

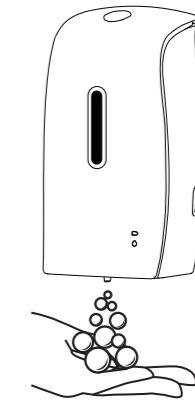
Instruction	Prohibited	Mandatory	Do not disassemble without permission	Keep away from fire

Attention	
	Do not expose the unit to direct sunlight to avoid deformation.
	Do not use the product rudely.
	Please take out the batteries and empty the tank when in long-term unused condition.
	Please clean the unit regularly.
	Do not clean the unit with water.
	Do not intentionally break or crash the unit.
	Do not clean the unit with strong corrosive chemical solvent. -Will cause surface damage or deformation.
	Do not let the dust into the liquid tank. -May block the tube and need to replace the liquid and clean the tank.
	Do not disassemble, repair or transform without permission. -Will cause breakdown. Please consult the purchase store or customer service for repair issue.
	Do not fill in corrosive chemicals.
	Keep away from fire.

-7-

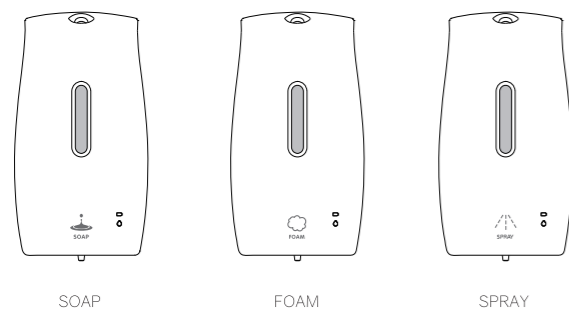


## Automatic Soap Dispenser



Please read user manual carefully before using.

This product has three liquid output function options. Please refer to the instructions below for your purchased function.

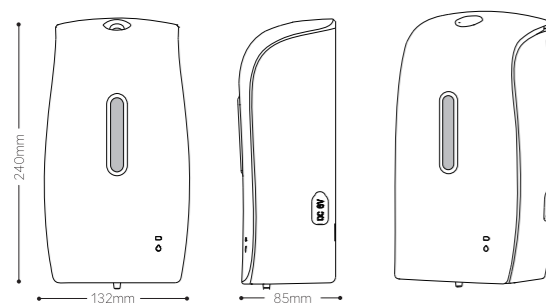


SOAP

FOAM

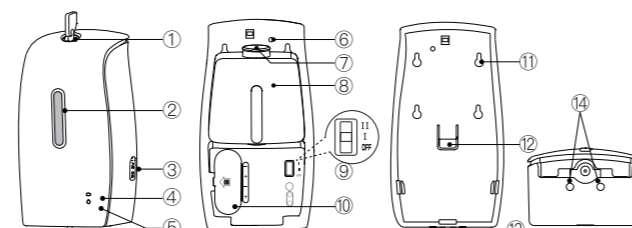
SPRAY

## Unit Dimension



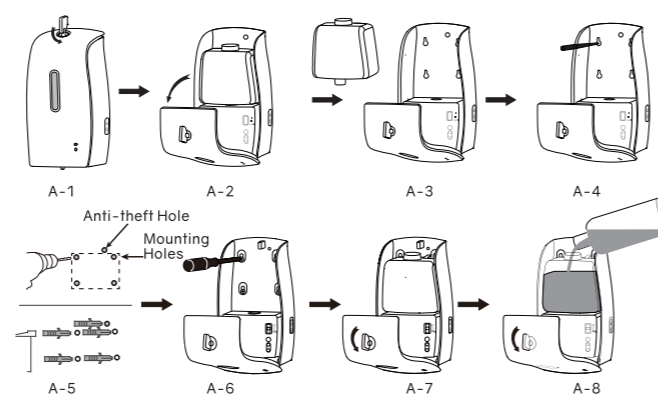
-1-

## Parts List



1. Lock	6. Anti-theft hole	11. Mounting holes x 4
2. Liquid visible window	7. Liquid tank lid	12. Control box fastener
3. Adapter socket	8. Liquid tank	13. Liquid outlet
4. Red indicator light	9. Power/gear switch	14. Induction Area
5. Green indicator light	10. Battery chamber	

## Installation



-2-

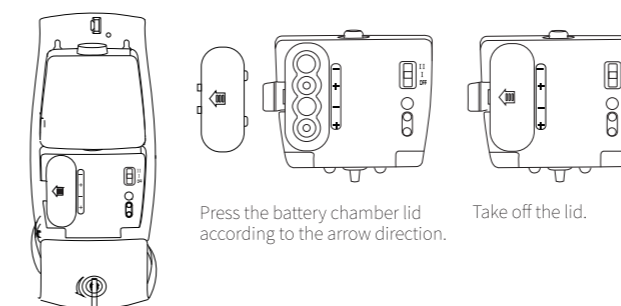
Please choose a proper place to install this dispenser and keep at least 40cm free space below it.

- Insert the key into the lock. (Pic A-1)
- Unlock and open the front cover. (Pic A-2)
- Take out the liquid tank. (Pic A-3)
- Make the drilling marks. (Pic A-4)
- Drill the holes and insert the plastic plugs. (Pic A-5)
- Fixate the dispenser onto the wall with screws. (Pic A-6)
- Load back the liquid tank. (Pic A-7)
- Fill in liquid. (Pic A-8)

**Note: Anti-theft hole is for installation in public places.**

## Battery Loading

Load 4 pcs AA alkaline batteries correctly.



Press the battery chamber lid according to the arrow direction.

Take off the lid.

-3-

Insert 4 pcs AA alkaline batteries according to instructions or connect DV6V power adaptor, slide the switch to I or II position and close the front cover to enter into the standby state.

The dispenser will enter into power-down mode to save battery consumption when in abnormal induction.

The Red LED has a fast blink when the dispenser is electrified, liquid output volume setting or front cover openness and closure.

Red LED indicator will act as a battery-changing reminder when battery voltage is under 4.8V.

Battery Voltage	RED LED	Function
3.9V~4.8V	blinks once every 3 seconds when standby	Remains functional
$\leq 3.9\text{V}$	blinks twice when sensor activated	Out of function

## Specification

Product Name	Automatic soap dispenser	Automatic foam soap dispenser	Automatic spray soap dispenser
Suitable Liquid	Liquid concentration $\leq 1000\text{mPa.s}$	Foaming liquid	Liquid alcoholity: 75%
Liquid Output Type	Liquid	Foam	Spray
Liquid Volume Adjustor	1 : 1.0ml 2 : 2.0ml	1 : 0.5ml 2 : 1.0ml	1 : 0.5ml 2 : 1.0ml
Sensor Type	Infrared sensor		
Sensor Range	2-12cm		
Material	ABS, PP		
Capacity	600ml		
Battery	4 pcs AA alkaline batteries (not included)		
Adaptor	Input voltage: AC100-240V 50/60Hz Output voltage: DC6.0V 1A (not included but optional)		

-4-